

## Navigation Class - Map Scale Exercise

1. Answer the following questions using the 1:24,000 scale map provided.

What is the straight line distance, in meters, from point A to point B?

Using a string or wire, determine the distance, in kilometers, along the road from A to B?

Using the edge of a piece of paper, determine the distance, in kilometers, along the road from C to D?

2. Answer the following questions using the 1:100,000 scale map provided. Please include your calculations with your answer.

What is the distance, in kilometers, along the trail from A to B?

What is the distance, in kilometers, along the trail from B to C?

What is the straight line distance, in miles, from A to C?

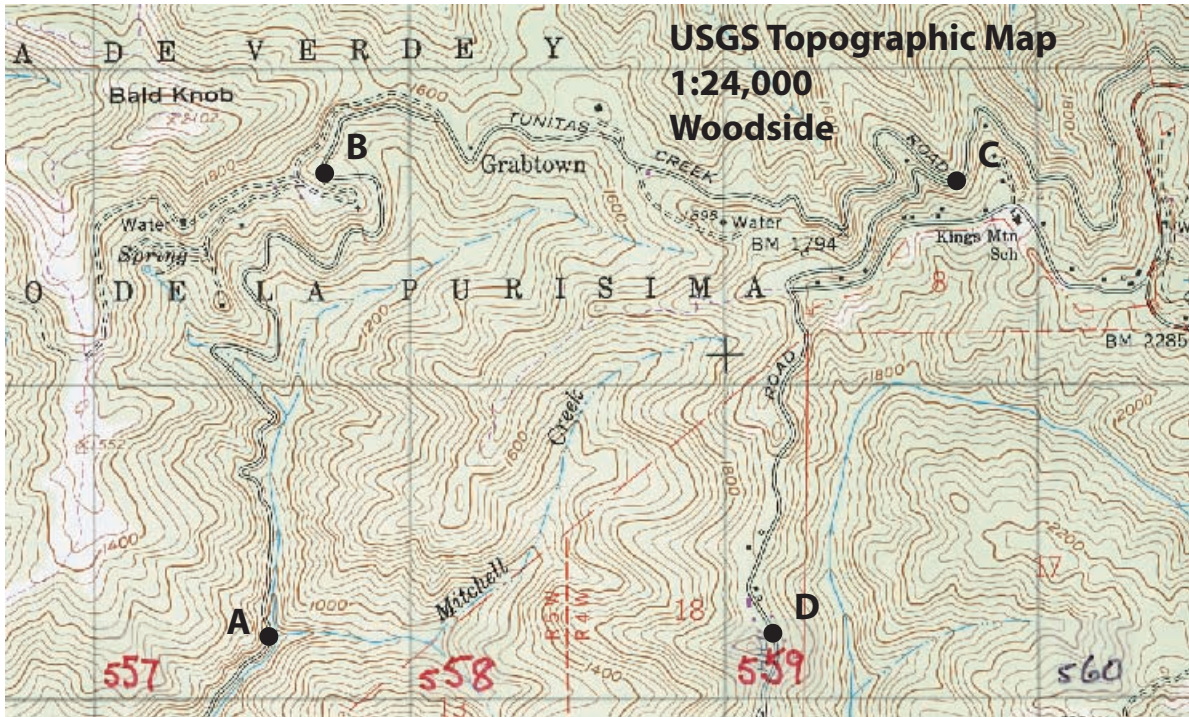
If you are hiking at 1.5 kilometers per hour, how long will it take you to hike from A to C?  
(Time = Distance / Speed)

The area of a rectangle is defined as height x width. An acre is approximately 4047 square meters. How many acres is the rectangle labeled D on the map?

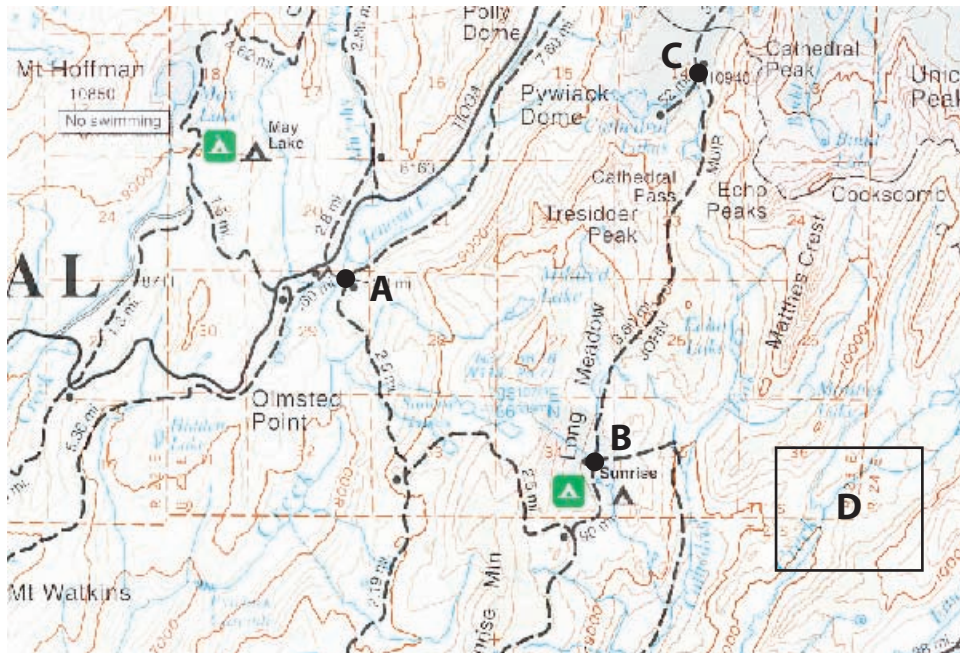
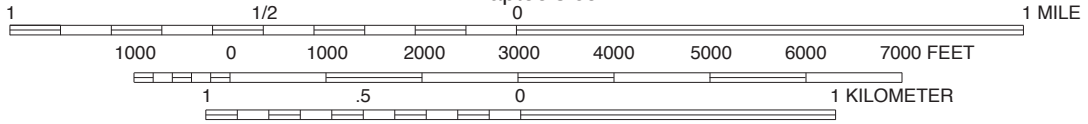
3. You are using a trail map that does not list its scale ratio. It does have a one kilometer scale bar, shown below. What scale is this park map?



# Maps for the Map Scale Exercise



SCALE 1:24,000  
www.maptools.com



**National Geographic  
Trails Illustrated  
Yosemite 1:100,000**