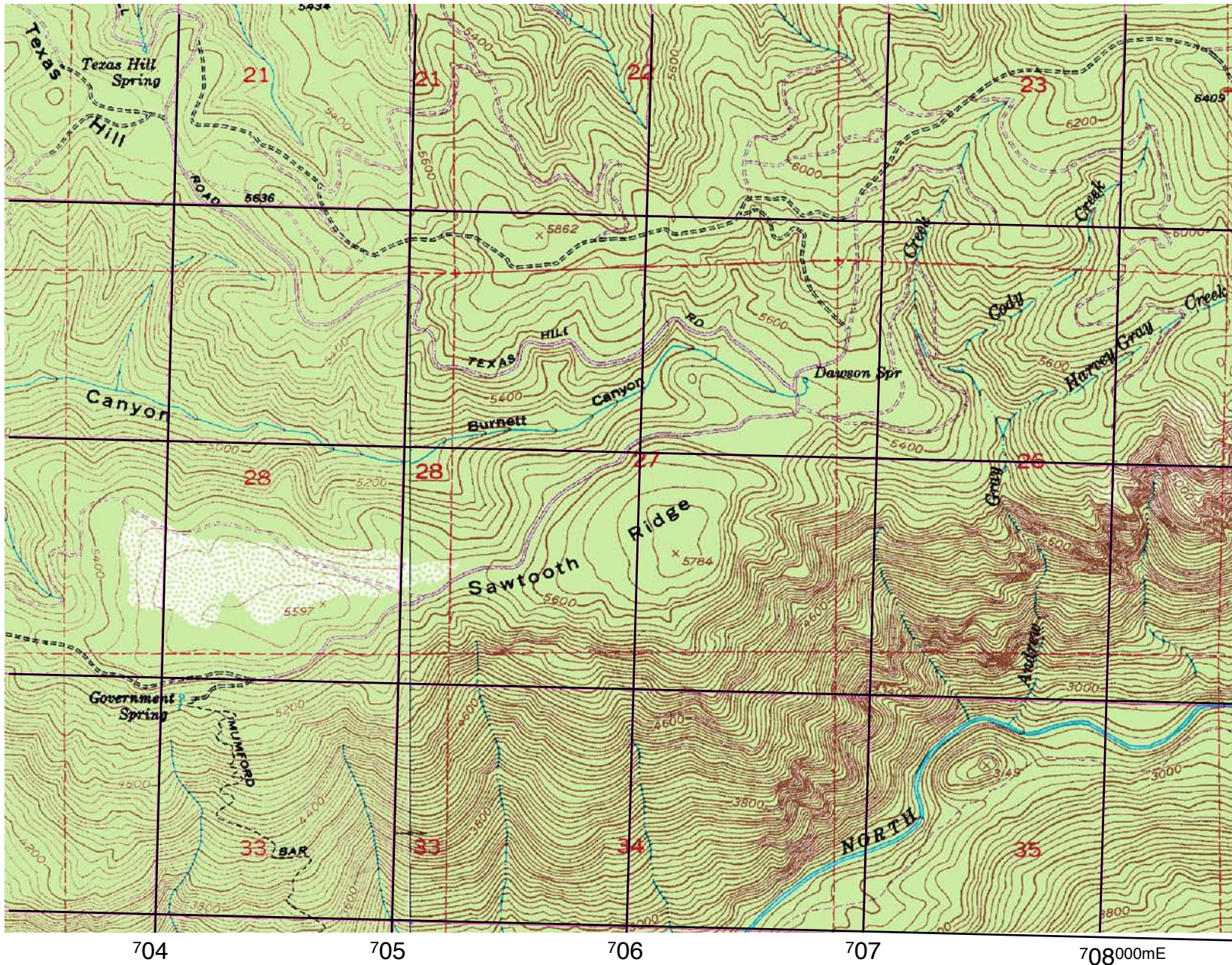


# UTM Practice Map



**#1 Locate Dawson Spr with 100m accuracy.**

**#2 Locate Texas Hill Spring with 100m accuracy.**

**#3 Locate Government Spring with 10m accuracy.**

**#4 Relocate Texas Hill Spring with 10m accuracy.**

**#5 What map feature is at 705.52km E 4345.94 km N?**

**#1 Locate *Dawson Spr* with 100m accuracy.**

**706.6 km E 4345.3 km N**

**#2 Locate *Texas Hill Spring* with 100m accuracy.**

**703.8 km E 4346.6 km N**

**#3 Locate *Government Spring* with 10m accuracy.**

**704.09km E 4343.98 km N**

**#4 Relocate *Texas Hill Spring* with 10m accuracy.**

**703.86 km E 4346.65 km N**

**#5 What map feature is at 705.52km E 4345.94 km N?**

**Peak at elevation 5862**