

Thoughts on buying a GPS

- Basic features
 - Coordinate display with UTM as an option
 - Rules out most car nav models
 - Fast start up, good receiver technology
 - Easy to use user interface
 - Hard to quantify
 - USB interface
 - Almost all have this now
 - Mass Storage Mode

Thoughts on buying a GPS

- Optional but useful...
 - GNSS Support GLONASS, etc.
 - Digital Compass
 - External Antenna Input
 - Uploadable maps [why?]

Thoughts on buying a GPS

- Doubtful usefulness... [IMHO]
 - Unit to Unit data transfer
 - Altimeter
 - Camera
 - MP3 player
 - 2 Way radio

Physical & Performance

- Unit dimensions & Weight
- Display size
- Display resolution
- Display type
- Battery & Battery life
- Waterproof & Floats

Maps & Memory

- Basemap
- Preloaded maps
- Ability to add maps
- Built-in memory
- Accepts data cards
- Waypoints/favorites/locations
- Routes
- Track log

More Features

- Automatic routing (turn by turn routing on roads)
- Electronic compass: (tilt-compensated, 3-axis)
- Touchscreen
- Barometric altimeter
- Camera
- Geocaching-friendly
- Custom maps compatible
- Photo navigation (navigate to geotagged photos)
- Outdoor GPS games, Hunt/fish calendar, Sun and moon information, Tide tables
- Area calculation
- Custom POIs (ability to add additional points of interest):
- Unit-to-unit transfer (shares data wirelessly with similar units):
- Picture viewer
- Garmin Connect™ compatible
(online community where you analyze, categorize and share data)

eTrex 10 \$93

- Good basic GPS + GNSS
 - 2011 Technology
- Smallish monochrome screen
- USB interface
- Basemap only



eTrex 20 \$159 [+\$66]

- Higher resolution color screen
- Ability to add maps
- Map memory + Data card slot



eTrex 30 \$241 [+\$82]

- Electronic compass
- Barometric altimeter
- Wireless unit-to-unit transfer



GPSMAP 64 \$257

- Basic High Sensitivity GPS+GNSS
 - 2013 technology
 - bigger screen than the eTrex
 - shorter battery life
- GPSMAP 64s \$308 [+\$51]
 - Compass + Altimeter
- GPSMAP 64st \$358 [+\$50]
 - pre loaded topo maps - not 1:24,000 detail



eTrex Touch 25 \$215

- Slightly bigger display than eTrex
- Electronic Compass
- Shorter battery life
 - 16 hrs vs 25 hrs
- eTrex Touch 35 \$240 (+\$25)
 - Barometric Altimeter
- eTrex Touch 35t \$310 (+\$70)
 - Topo US 100k maps



Montana Series

- Montana 610 \$400
 - Bit bigger color touchscreen
 - 2 AA batts. 22 hrs
 - Compass + Altimeter
 - Wireless transfer?
 - 610t +\$40 USA Topo 100k
- Montana 680 \$460 [+\$60]
 - 8 Mp Camera
 - 680t +\$40 USA Topo 100k



Oregon Series

- Oregon 700 \$400
 - Bit bigger color touchscreen
 - 3 AA batts. 16 hrs
 - Compass + Altimeter
 - Wireless transfer?
- Oregon 750 \$500 [+\$100]
 - 8 Mp Camera, WiFi
 - 750t +\$50 US Topo 100k



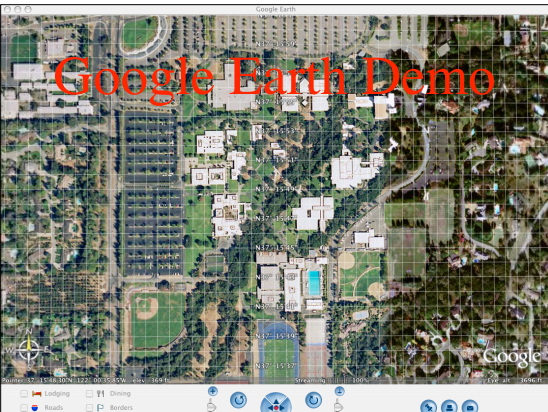
Let's take a break!

In about 10 minutes,
we'll return.



Online Mapping Resources

Google Earth Demo



http://www.nearby.org.uk/google/Gridlines_utm.kml.pl

Google Earth UTM Grid Lines KML file

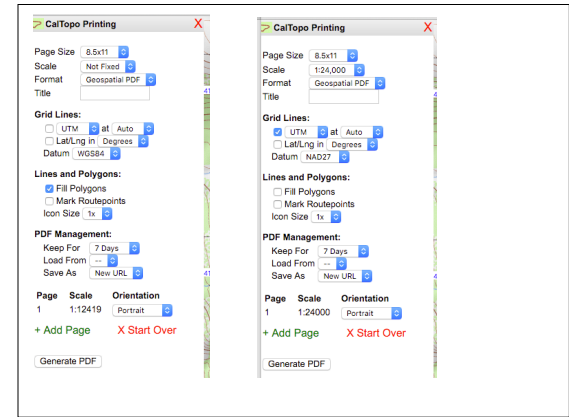
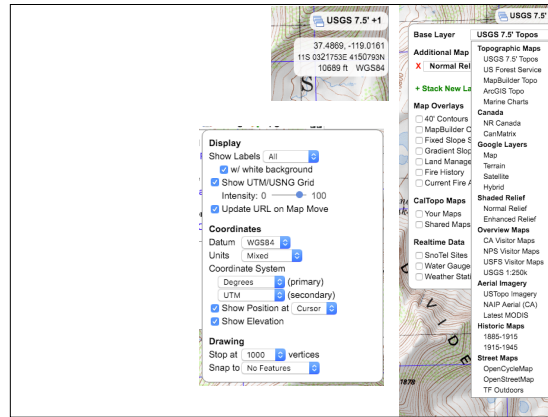
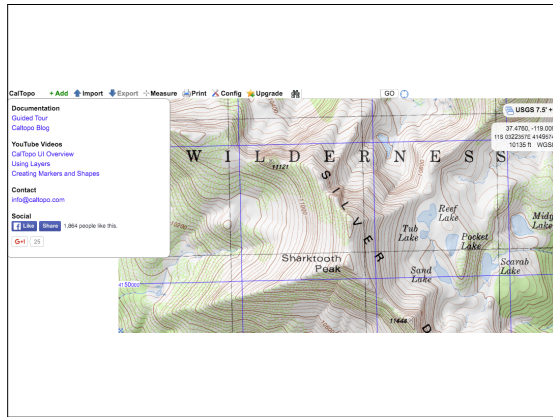
CalTopo.com



- Matt Jacobs
- BAMRU

Membership Types

	Free	Basic	Pro
Cost	—	\$20/yr	\$50/yr
Private Maps <small>(included public maps)</small>	5	20	200
Largest PDF Size	8.5x11	13x19	36x48
PDF Page Limit <small>(8.5x11 and 13x19 only)</small>	5	15	40
Keep PDFs For	7 days	30 days	1 year
KMZ Images	16	50	200
MBTiles Images <small>250x250 px</small>	256	800	3200
KML Super-Overlays	No	Yes	Yes
WMS/WMTS Access	No	No	Yes
Custom MapBuilder Layers	No	No	Yes





PDF Maps


Get the App. Get the Map.™

Winner of multiple awards including
 • Best Map Product Worldwide in 2011
 • Best Maps for Multimedia Application
 • New Technology & New Media Award
 • Technology Innovation Award for Mobile Mapping



<http://www.avenza.com/pdf-maps>

Free



A TRIMBLE COMPANY



mytopo.com

Printed & Online Topo Maps,
Aerial Photos, TopoPhotos, and Hunting Maps

Step 2: Build your map

Select a Base Map

- Topo Maps
- Street Hybrid and Aerial
- Standard Aerial
- Premium Satellite
- Hybrid/Topo/Photo

Add Premium Overlays

- Private Property Lines
- Public Land Boundaries
- Public Land Roads

Choose Map Area

Paper Size:

Paper Orientation: Wide Tall

Map Zoom:

[View a full map preview](#)
See the full detail of your map before you order.
[Preview now.](#)

[Continue to Step 3 >](#)
[< Back to Step 1](#)



Map Price: **\$14.95**
 Source date: 2004
 Map Scale: 1 inch = 2000 feet
 Area: 11.2 sq mi (59,368 acres)
 Area Width: 11.4 mi
 Area Height: 8.0 mi

Step 3: Choose map finish

Waterproof "Outdoor" Map

MyTopo waterproof maps are printed with UV fade-resistant and waterproof inks on a special waterproof and tear-resistant paper. Waterproof maps are available rolled or folded for rugged outdoor use.

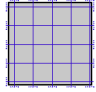
Folded
 Rolled

\$14.95

Laminated Map

Full-seam laminated map printed with UV fade-resistant inks. The lamination protects the map from water and dirt, and is writable/erasable with standard dry-erase markers. Available rolled.

\$29.95



[< back to step 2](#) [Continue to Step 4 >](#)

Step 4: Personalize

You can personalize your myTopo.com map with your own title and subtitle.

Title:

Please do not use an ampersand "&" in your customized titles, subtitles, and owner names.

Subtitle:

Owner's Name

We'll print your name (or a friend's) on your map as the "map owner". You do not have to provide an owner name... we'll just leave it blank for you.

Owner's Name:

Navigational Grids

Lat/Lon

Lat/Lon grids are in degree/minute/second coordinates.

No Grid Tic Marks Full Grid Lines

UTM / MGRS (Military Grid) / USNG (US National Grid)

UTM/MGRS grid spacing 1000 meters.

No Grid Tic Marks Full Grid Lines



Datum/GPS Setting

Choose the navigation grid to match your GPS. Note that most GPS devices default to WGS84/NAD83, so you only need to change this setting if you're using older NAD27 coordinates.

Standard NAD83/WGS84 >

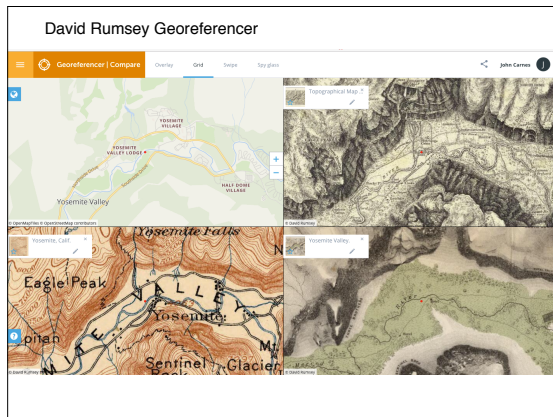
Shaded Relief

Standard topo, no relief shading Enhanced topo, add relief shading

USGS National Map Demo

<http://viewer.nationalmap.gov/basic>



PosterBrain

1. Upload Your Poster
Click the "upload your poster" button to the left.
2. Select Size & Quantity
 - 16" x 24" Small Poster **\$12**
 - 24" x 36" Medium Poster **\$19**
 - 36" x 54" Large Poster **\$43**
 - Custom Size UPLOAD FOR PRICING
Oversize Poster Printing: 42" x 150" Max

SELECT ADDITIONAL OPTIONS

- Add Lamination \$12 Add Giclee \$24
- Add Mounting \$35 Add Int'l Shipping \$26

\$6 Flat-Rate Priority Shipping
Any Quantity - Any Place in the US

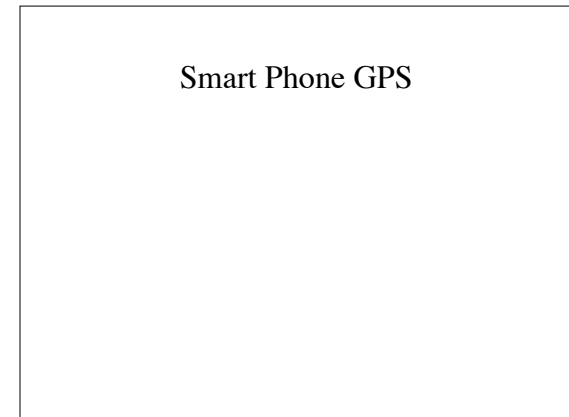



GeoSpatial Technology Solutions West Valley College

Courses

Certificate Course Requirements
Earning the West Valley College GIS Certificate requires completing ten three unit courses for a letter grade or credit/no credit option. All courses are acceptable for credit at California State Universities.

- PKMGT 016A** Introduction to GIS and GPS
- PKMGT 016B** Intermediate Desktop Geographic Information Systems (GIS)
- PKMGT 016C** Spatial Analysis for GIS
- PKMGT 016D** Cartographic Design for GIS
- PKMGT 016E** Database Design and Management for GIS
- PKMGT 016F** GIS Internship
- PKMGT 016G** Introduction to Remote Sensing
- PKMGT 016 H** Computer Aided Design
- GEO 01** Intro Physical Geography
- GEO 02** Intro Cultural Geography





<https://www.gaiagps.com>
iPhone & Android
\$20



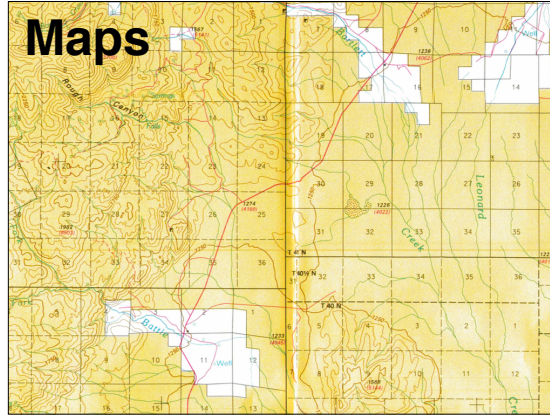
<http://gps.motionx.com/>
iPhone
\$2

<https://www.avenzamaps.com/>
iPhone & Android
Free
\$30/year for unlimited maps

Blackrock Desert using digital maps in the field

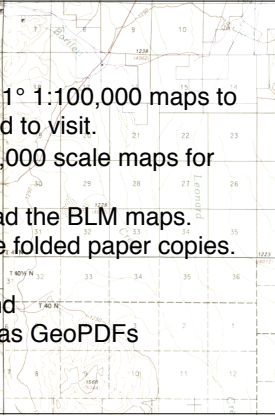


Maps





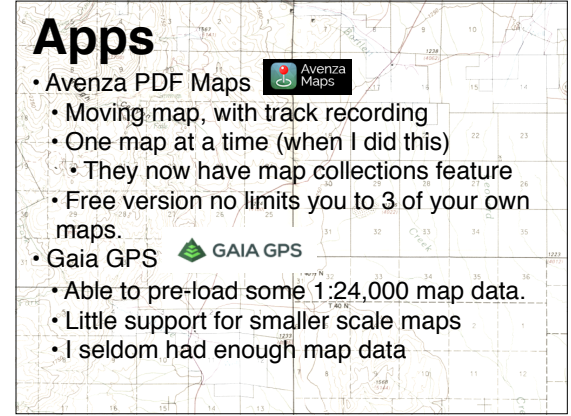
Maps

- It takes 3-6 BLM 30' x 1" 1:100,000 maps to cover the area I planned to visit.
- There are 32 7.5' 1:24,000 scale maps for each BLM sheet.
- I decided to just preload the BLM maps.
- But all I could get were folded paper copies.
- Kinko's Office to scan
- Georeferenced by hand
- Loaded onto my iPad as GeoPDFs



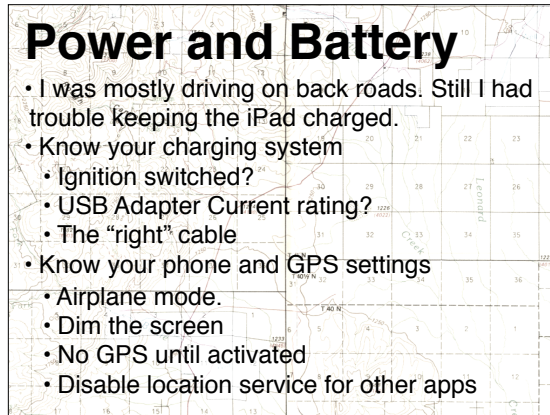
Apps

- Avenza PDF Maps 
- Moving map, with track recording
- One map at a time (when I did this)
 - They now have map collections feature
- Free version no limits you to 3 of your own maps.
- Gaia GPS  GAIA GPS
- Able to pre-load some 1:24,000 map data.
- Little support for smaller scale maps
- I seldom had enough map data



Power and Battery

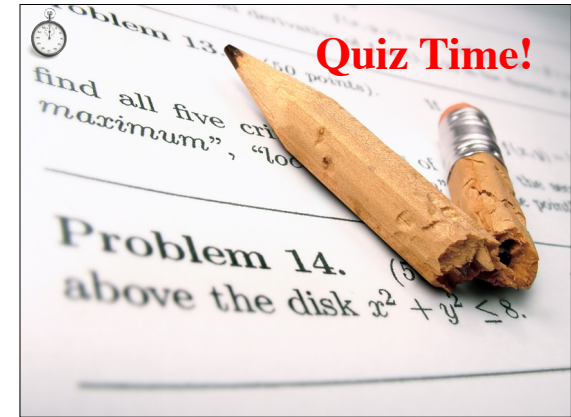
- I was mostly driving on back roads. Still I had trouble keeping the iPad charged.
- Know your charging system
 - Ignition switched?
 - USB Adapter Current rating?
 - The "right" cable
- Know your phone and GPS settings
 - Airplane mode.
 - Dim the screen
 - No GPS until activated
 - Disable location service for other apps



Heat

Temperature
iPhone needs to cool down before you can use it.
slide for emergency

- It will stop working!
- Charging it warms it up too
- Keep it out of the sun
- I'd have at least 30min. of downtime to get it cool enough to run again
- Too cold can also be a problem



The Plan

- Take the quiz
- Eat lunch
- Continue outside exercises
 - Do a more difficult low visibility route
 - Practice the Lot 2 bearing and distance problem
 - Find more “flags”
- Grade the quiz

Just because it's on your map, doesn't mean you can go there!

- Private Property
 - Hiking, hunting, fishing are usually not OK in the United States. Roads may or may not be OK
 - Acceptable behavior varies by region and country.



Just because it's on your map, doesn't mean you can go there!

- Public Lands
 - Not all activities permitted
 - Some areas require permits
 - Some areas closed to public access
- Indian reservations are not public land
 - Each is likely to have it's own unique access restrictions.

Just because it's on your map, doesn't mean you can go there!

- Poking around military and government facilities with your nav gear, will likely draw attention from security forces.
- Your nav gear may get you arrested and jailed in some countries.

My Favorite Nav Books

- Navigation - Finding Your Way on Mountain and Moorland
 - Kevin Walker ~\$18
- Navigation in the Mountains
 - Carlo Forte ~\$19
- Ultimate Navigation Manual
 - Lyle Brotherton ~\$15

What Can Go Wrong...

Change in Visibility

- Darkness
- Fog, snow, rain
- Snow covering roads, trails, and terrain

Passive Transport

- Hiking behind a leader, paying no attention to navigation
- Getting dropped off by vehicle or helicopter

Getting Separated

- One or members of a group, without good navigation skills get separated from the rest of the group.

Equipment Failure You – Fatigue

- Tired, Cold, Wet, ...
- All of these lead to stupid mistakes.

Equipment Failure

- I talk to lots of people that “don’t trust” the GPS system...

- I ask them what time it is, and none of them look towards the sun or pull out a sundial.

Equipment Failure GPS

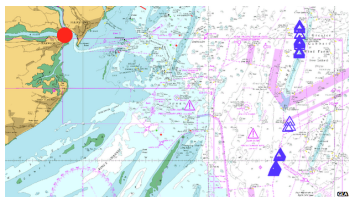
- You forgot how to use it
- Dead batteries
- Device failure or loss

April 2nd 2014

Satellites of the GLONASS network experienced a half-day outage when bad data was uploaded to spacecraft.

The GLA map shows a GLONASS receiver at Harwich giving corrupted position fixes that were off by more than 50km.

The Authorities say the 2 April event is a timely reminder that alternatives to satellite navigation are essential.



A GLONASS receiver (red dot) on England's east coast gave position fixes in the North Sea (blue triangles) BBC 9/14/2014

Equipment Failure Compass

- You forgot how to use it
- Poor visibility limits usefulness
- Misadjusted for declination
- Device failure or loss

Local Magnetic Anomalies

- May be as much as 90 degrees
–3-4 degrees is common
- North of Kingston, Ontario; 90° of anomalous declination.
- Kingston Harbor, Ontario; 16.3° W to 15.5° E of anomalous declination over two kilometers (1.2 miles); magnetite and ilmenite deposits.
- Savoff, Ontario (50.0 N, 85.0 W). Over 60° of anomalous declination.
- Ramapo Mountains, northeastern New Jersey; iron ore; compass rendered useless in some areas.
- Near Grants, New Mexico north of the Gila Wilderness area; Malpais lava flows; compass rendered useless.

Equipment Failure Map

- Traveled beyond the maps carried
- Got wet - beware of water based inks
- Lost it



Let's take a break!

In about 10 minutes,
we'll return.

Emigrant Wilderness Orienteering Rally



Hints and Tips

- Plot the points quickly, before you join your maps together. Have someone else double check the point plotting.
- Consult the alternate maps. Don't write on them.
- Highlight trails, so they stand out visually.
- Mark your route next to the trail, not on top of it.
- Create course legs for off trail travel. Use your new route finding knowledge.
- Use the grid and contours for quick time estimates
- Create some choice points to skip checkpoints if time is short.
- Create a bailout plan.
 - Use the alternate maps to see the surrounding area.

